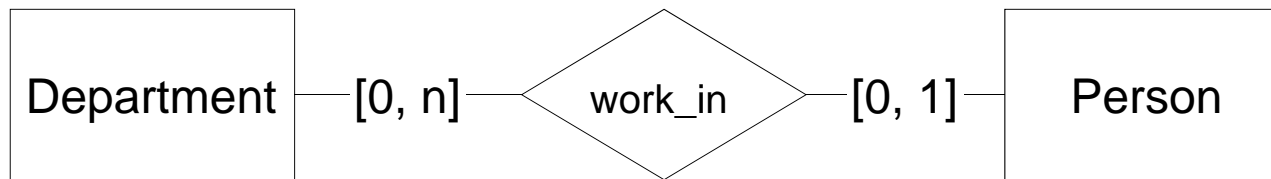


Discussion: Personell (1)

- ER-Diagram:



Realization in the relational model:

Create Table Department (
DeptNr **integer not null primary key**)

Create Table Person (
PersNr **integer not null primary key**,
DeptNr **integer references** Department)

Discussion: Personell (2)

Additional rule:

In every department at least one person has to work in
([1, N])

Realization in the relational model:

Additional rule is not possible to express in DDL, has to be put aside and solved e.g. by a trigger; i.e. DDL remains the same as in previous page

Discussion: Personell (3)

- Additional rule :
 - Every person has to work in exactly one department ([1, 1])

Realization in the relational model:

Create Table Department (
DeptNr **integer not null primary key**)

Create Table Person (
PersNr **integer not null primary key**,
DeptNr **integer not null references** Department)